

# JayB's Sound Set for KORG X5D (X5\*, 05R/W\*, X5DR)

## Installation Guide

---

Thank you for choosing my sound set for the underestimated Korg X5D. The following guide will help you transferring my sound bank to your synth.

The file **JayB\_X5D.zip** you've downloaded from my website contains three files:

<b>JayB_X5D.mid</b>	This file contains the sound set as SysEx data in standard MIDI file format.
<b>JayB_X5D.syx</b>	Same as above, but in RAW SysEx data format.
<b>JAYB.X5</b>	This file contains the sound set in SE05 editor format.

## Choosing the right MIDI interface

I regularly get mails from people trying to send my sound set to their X5D and the synth simply shows no reaction at all. In most cases people use this 10\$ MIDI interface like you see on the right site. **This cheap USB MIDI interface CANNOT HANDLE LONG SYSEX STRINGS**, but unfortunately the X5D needs those. Please make sure your MIDI interface is a better quality one. I recommend brands like ESI, MOTU, Roland or Yamaha.



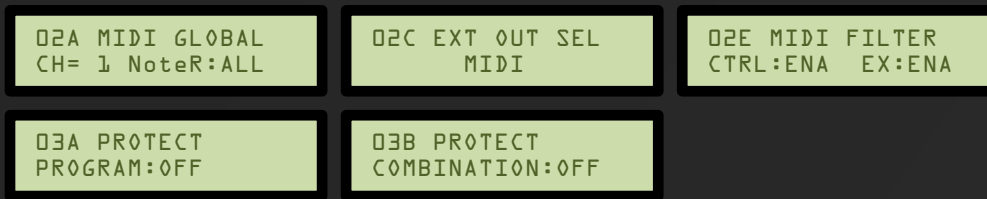
## Preparing your X5(D)

Before you can use my sound set you have to make your X5(D) ready to receive SysEx data and store new sounds.

**ATTENTION:** When you transfer a new sound set to your synth all programs of Bank A and all combinations will be overwritten. If you created your own sounds, make sure to create a backup before.

First you have to establish a MIDI connection from your PC to your synth. If you want to backup sounds you of course have to make a connection from your X5D to your PC too. You can also use the classic To-Host connection, but I will not support this anymore.

Then go into your **GLOBAL** menu and set the following parameters:

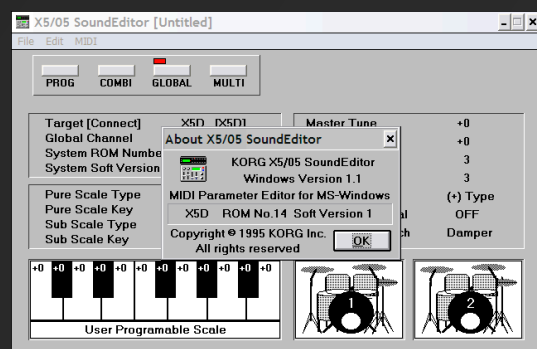


Leave the GLOBAL menu again.

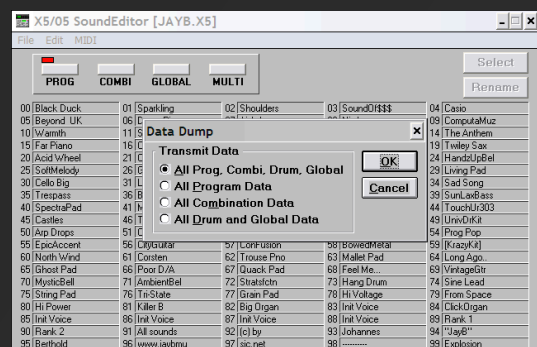
## Transferring the sound set using the SE-05 editor

If you're using a non-64-bit Windows you can use the old SE-05 editor that originally came with the Korg X5D. You can find a download link on my website.

Install it, start it and select the MIDI ports your X5D in the MIDI Setup window. Afterwards it should show the connected device including ROM number.



Next open *JAYB.X5*. You should see the list of my program patches. Now all you have to do is choose "Transmit..." from the "MIDI" menu and click OK. The X5D will show "processing..." and after a couple of seconds everything is there.

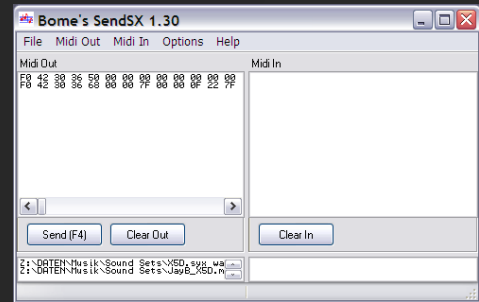


If you want to **backup** your own sounds before, select "Receive..." from the "MIDI" menu and click OK. Afterwards save the sounds as .X5 or .05R file.

## Transferring the sound set on Windows x64

If you're using a 64-bit Windows system or don't want to use the SE05 editor, you can use **Bome's SendSX** to transfer my sound set.

Open *JayB\_X5D.mid* with it. You will see a couple of lines of numbers and letters in the "Midi Out" box. From the Midi Out menu select the MIDI port the X5D is connected to. Then click on "Send (F4)" and wait a while. Done!



To backup your own sounds, select the MIDI In port from the "Midi In" menu and manually send a dump from GLOBAL menu. Bome's SendSX will automatically start receiving.

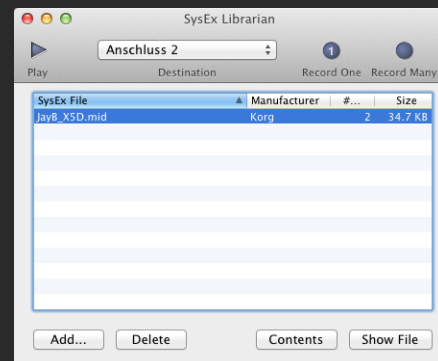
```
04A MIDI DUMP
ALL >> MIDI OK?
```

## Transferring the sound set on Mac OS X

On OS X I recommend using the **snoize SysEx Librarian**.

Simply add the *JayB\_X5D.mid* to the library, select the port the X5D is connected to as "Destination" and click on "Play". That's it.

For backing up your current sound set, click on the "Record Many" buttons and send your MIDI dump from Global page 04A (as seen above).



\* Note for X5 and 05R/W users: Some sounds require waveforms only available on the X5D(R), such as WhiteNoise. These patches will sound wrong on your device. This is not due to a faulty sysex transfer but a limitation of your synthesizer.