

# JayB's Sound Set for **YAMAHA PLG150-AN** Installation Guide

---

Thank you for choosing my sound set for the amazing PLG150-AN plugin board for Yamaha synths and sound modules. This guide will show the installation routine on the CS6x / S80 / S30 synths as well as on the Motif (ES) / S90 (ES) synthesizers. I have no information about the MU series or the AN200.

The file **JayB\_PLG150AN.zip** you've downloaded from my website contains three files:

- |  |   |
|--|---|
| <b>JayB's.ANS</b>                          | This file contains the pure sound data in AN Expert Editor format. It's compatible to any host of the PLG board.                |
| <b>JayB_PLG150AN.MID</b>                   | This file contains the pure sound data in SysEx format and is identical to the AN Expert Editor's SysEx dump.                   |
| <b>AUTOLD1.W2B</b>                         | This file contains the sound data in Motif (ES) format.   |
| <b>JBPLGMot.W7E</b><br><b>JBPLGS90.S7E</b> | These files contain the effect settings that are stored in the host synth's USR PLG bank and are in Motif ES and S90 ES format. |

## Basics when working with PLG boards

To completely understand the sound patch management of the PLG boards in the host synth you need to know the following.

The PLG board has three sound banks: 00, 01 and 02 with 128 sound patches each. While the first and second banks contain factory presets the third can contain custom sounds. The PLG board does **not** have a durable memory. It only has a RAM that gets cleared every time you switch off the host synth. Also, the PLG board does **not** have any effects except for distortion and EQ and thus they are not part of the PLG sound set itself. Effects like Reverb and Delay are managed by the host synth and stored externally.

The only way to create sounds for the PLG150-AN is using the AN Expert Editor software for Windows or Mac OS Classic. When you create a couple of sounds in this software and store them with the editor they're not automatically updated in the PLG board. You have to transfer them as bulk dump (SysEx) to the PLG board inside the host synth. Once that is done they appear in the synth when you select them on the board.

However, since the PLG board's sound memory is volatile I you need to retransfer them after each time you turn the synth on. Luckily Yamaha has integrated an auto load function as you will see on the next pages.

## Basic installation of the sound set (all synths)

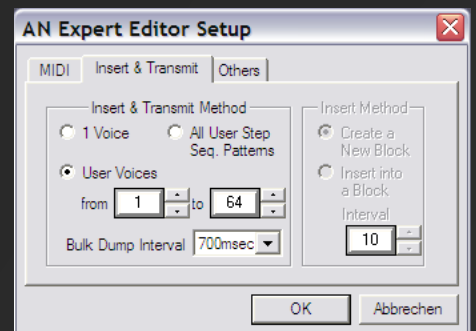
Establish a MIDI connection from your PC to your host synth. Install the AN Expert Editor on your PC (see my website for a download link) and start it.


Set up your MIDI ports. You will find a small window with one button saying "MIDI SETUP". Behind the button you can select which MIDI ports the AN Expert Editor can work with.



Now open the AN Expert Editor's option menu. Under "MIDI" you can select the MIDI port the editor will actually use. All other settings *should* be "1".

Modify the "Insert & Transmit" settings like in the image on the right.



Now select any sound of the PLG board on your host synth. Make sure it can receive SysEx data (turn off any filters). Finally, click the black MIDI jack  to start the bulk dump process. There shouldn't be any display action.

If you don't have Windows or you don't want to use the AN Expert Editor you can also use "JayB\_PLG150AN.mid" in a midi file player or SysEx program of your choice to transfer my sounds.

## Working with the sound set (CS6 / Motif / S90 series)

To make working with the PLG boards most comfortable I really recommend getting a Smart Media card or a USB drive if you haven't one already. As I told you before the PLG board's memory is volatile so after you transferred the sounds to your synth you should store them on the Smart Media card using the CARD or FILE mode to load them without a PC. If you want your synth to load the sounds at start up you should name them AUTOLD1, while 1 refers to the slot your PLG board is installed to.

CS6x / S80 / S30:

```
Save) Type File A-? Cursor
Card plugin] >001:[AUTOLD1] .S2B]
```

Motif (ES) / S90 (ES):

```
FILE Current Dir:root
TYPE PluginAllBulk] (file list)
[AUTOLD1 ] ->
[ EXEC ] [SET NAME]
[CONFIG][ SAVE ] [ LOAD ] [RENAME][DELETE][ NEW @ ]
```


Now that we have the sounds ready we should select them from the PLG board's internal user bank 036/002. On the **S80 and CS6x** you can do this by pressing and holding the PLG1 or PLG2 button and turning the data wheel or using the INC and DEC buttons. On the **Motif and S90** you can press [F2] to get into the bank selection view and use the data wheel or INC / DEC buttons.

Now you can edit the sounds via the EDIT mode and for example add some effects to it or set some parameter offsets if you don't like the sound yet. When you store them now they're saved in the synth's internal USER PLG bank, which can be selected the same way you select the board's internal user bank (usually it's the very first bank you can select). Since these sounds are in the host synth's memory they aren't volatile. If you want to save them externally you need to save them in an "All" file (S2A, W2A, W4A, W7A, S7A) or in a "All Voice" file (W2V, W2E, W4V, W4E, (W7V, W7E, S7V, S7E) (Motif (ES) / S90 (ES) ONLY).

**Advice:** By default there's an offset for the modulation wheel for the Pitch LFO (classic vibrato) set in the host synths. Since my sounds already have the modwheel assigned to something I recommend setting it to zero in the host synth.

## Easy installation on Motif ES / S90 ES

If you're a user of a Yamaha Motif ES or S90 ES and have installed the PLG150-AN board in slot 1 you're lucky. All you need to do is copy "AUTOLD1.W2B" to the root directory of your synth's USB drive. If you switch on your synth now it should take some time saying "Now loading... (plug-in bulk)".

If you want to use my effect settings too you need a Mac or PC with Studio Manager 2 and the Motif ES / S90 ES voice editor installed. Open it and set up all MIDI ports to have a working connection to your synth. Open the JBPLGMot.W7E/S7E file, click on the  "Transmit Voice Bulk" button, select "Plugin 1 User" from the drop-down menu and click on "Start". After a few moments your synth's PLG USR bank should be filled with fancy wet VA sounds.

Hope you could follow this guide. Questions? E-mail me: [contact@jaybmusic.net](mailto:contact@jaybmusic.net)

Have fun!